



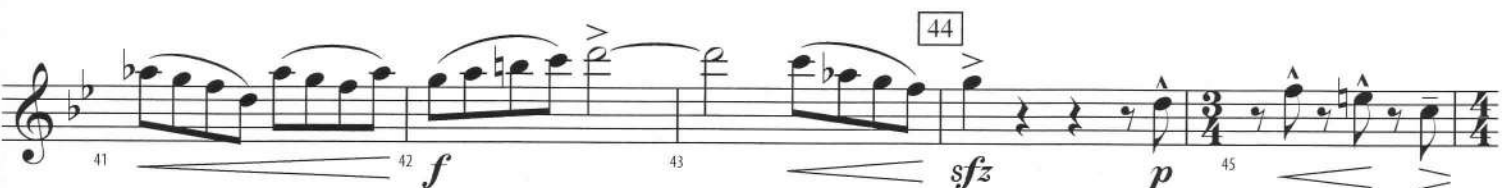
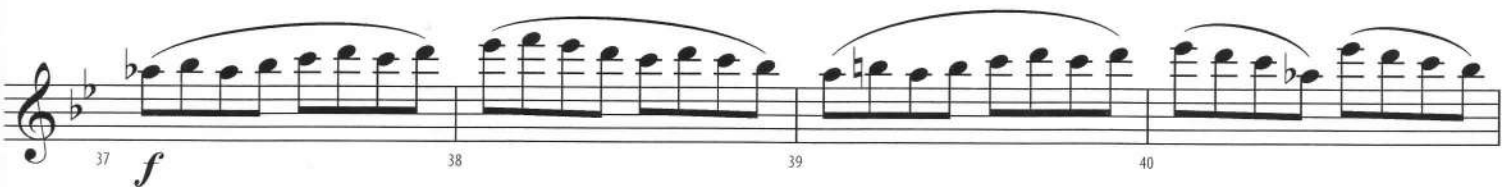
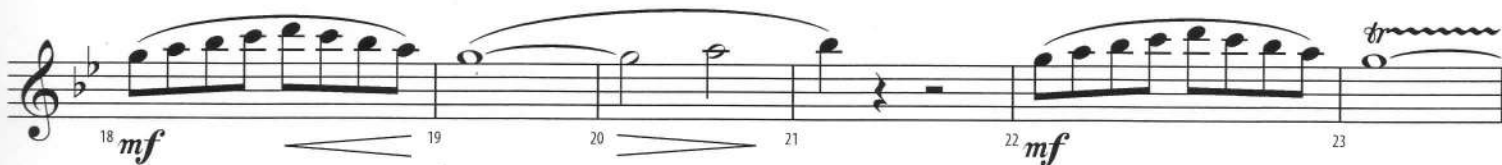
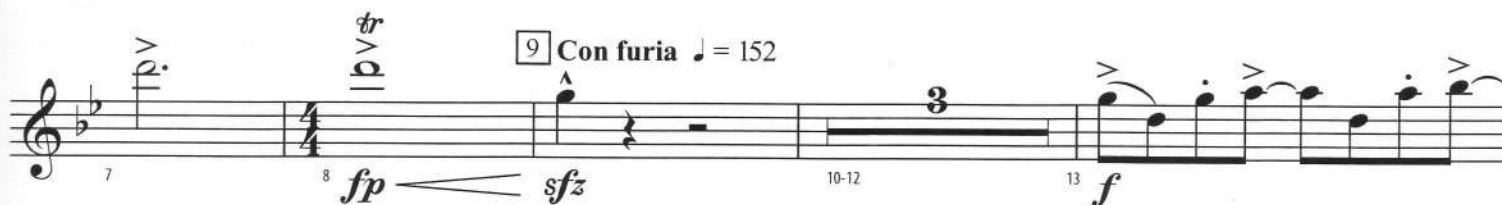
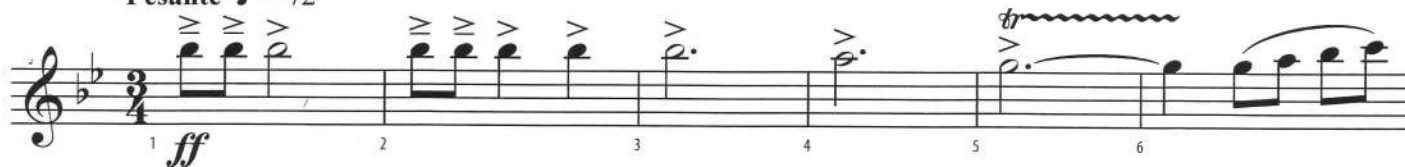
Dedicated to the Band Directors of the Central O'ahu District, Honolulu, Hawai'i

FLUTE

The Temple of Ka Uka

By Ralph Ford (ASCAP)

Pesante ♩ = 72



FLUTE - 2

46 47 48 49 50 *div.*
p

51 52 53 54 All *mf*

55 56 57 58 59 *f*

60 61 *mf* 62 63 64 65 *mf* 66

67 68 69 Celebration! *sfz* 70-72 73 *mf* 74 75
clap stomp L.F. R.F. L.F. L.F. R.F.

76 77 78 79 80 81 82 83
f L.F. R.F. L.F. L.F. R.F. L.F. R.F. L.F. L.F. R.F.

84 85 86 87 88 89 90 91 92
L.F. R.F. L.F. L.F. R.F. L.F. R.F. L.F. L.F. R.F.

93 94 95 96 97 Tempo I *fp* *ff* 98 99 100
molto rall. Play *tr*

101 102 103 104 105 106
fp *ff* *sffz*
molto rall. al fine Grave ♩ = 50

OBOE

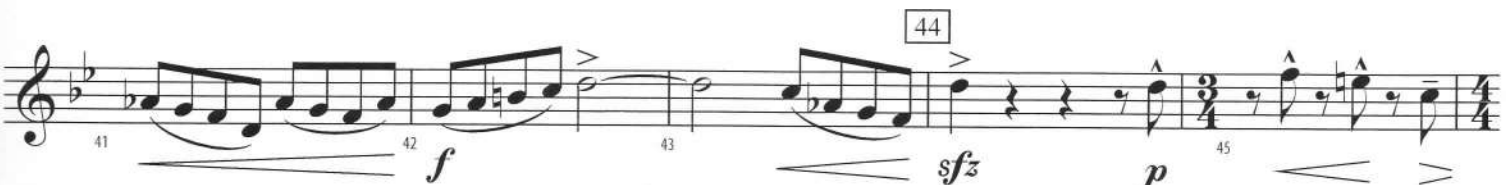
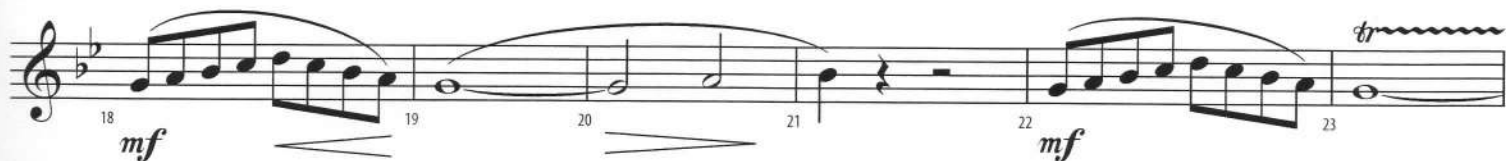
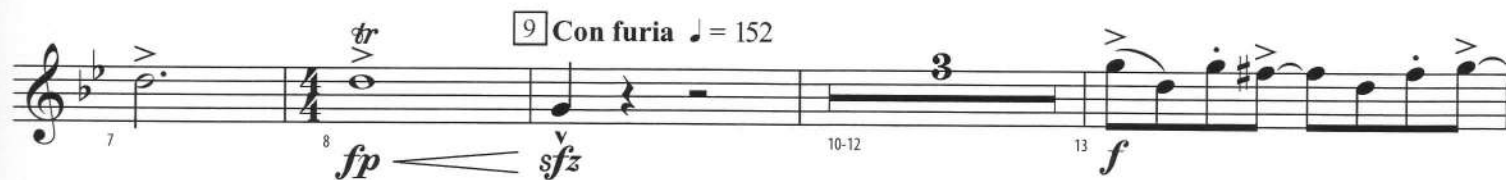


Dedicated to the Band Directors of the Central O'ahu District, Honolulu, Hawai'i

The Temple of Ka Uka

By Ralph Ford (ASCAP)

Pesante ♩ = 72



OBOE - 2

46 *p*

54 *mf*

60 *f*

61 *mf* 62 *f* 65 *mf* 66

69 Celebration! *sfz* 70-72 73 *mf* L.F. R.F. L.F. 74

77 *f* L.F. R.F. L.F. L.F. R.F. L.F. R.F. L.F.

85 L.F. R.F. L.F. R.F. L.F. L.F. R.F. L.F. R.F. L.F.

93 *fp* 96 *ff* 97 Tempo I *molto rall.* 98 99

100 101 102 103 104 *fp* 105 *ff* 106 *sfz* *molto rall. al fine*

Grave ♩ = 50

BASSOON



Dedicated to the Band Directors of the Central O'ahu District, Honolulu, Hawai'i

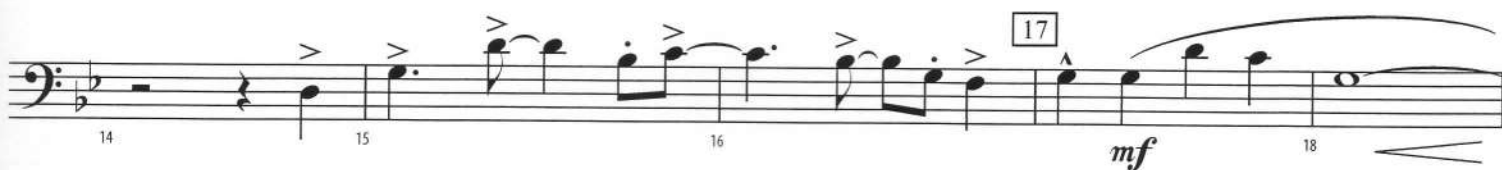
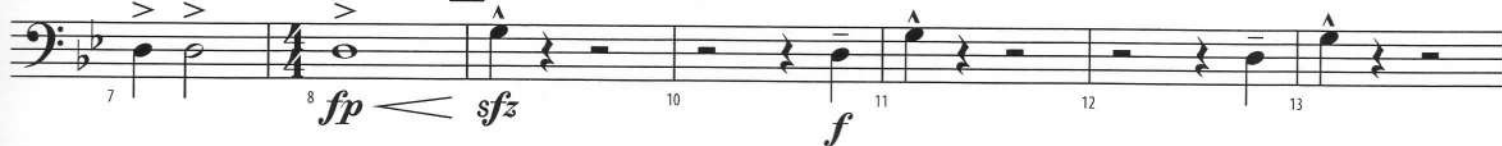
The Temple of Ka Uka

By Ralph Ford (ASCAP)

Pesante ♩ = 72



[9] Con furia ♩ = 152



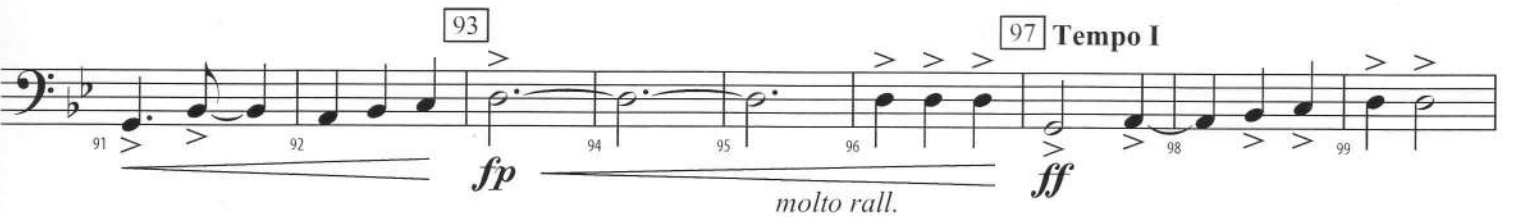
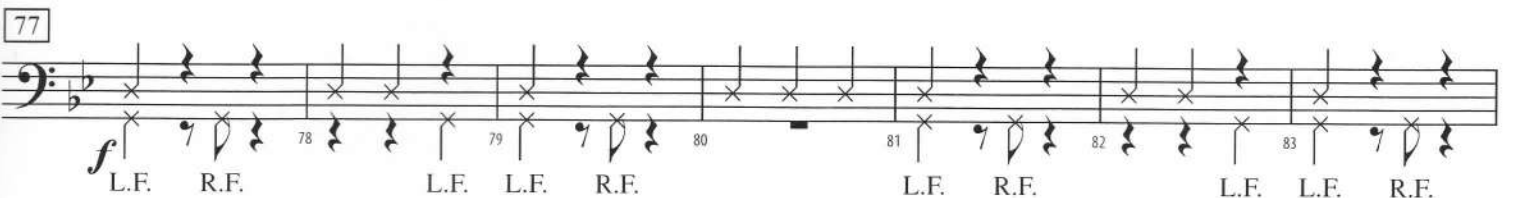
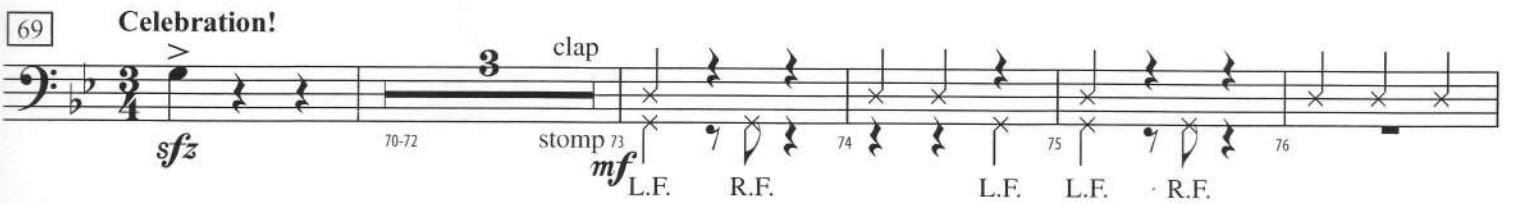
[33]



[44]



BASSOON - 2



The Temple of Ka Uka

1st B♭ CLARINET

By Ralph Ford (ASCAP)



Pesante ♩ = 72

1 **ff** 2 3 4 5 6

7 8 **fp** **sfz** 9 **Con furia** ♩ = 152 10-12 13 **f** 14 15 16 17 **mf** 18

19 20 21 **mf** 22 23 24

25 **f** 26 **sfz** 27 28-30 31 **f** 32

33 34 **mf** 35 36 37 **f** 38

39 40 41 42 **f** 43

44 45 **sfz** **p** 46 47 48



1st B♭ CLARINET - 2

54

49 50 51 52 53

p *mf*

55 56 57 58 59

f

60

61 62 63 64 65

mf *f*

69 Celebration!

66 67 68 70-72

mf *sfz*

clap

73 stomp

74 75 76 77 78

L.F. R.F. L.F. L.F. R.F. L.F. R.F. L.F.

mf *f*

79 80 81 82 83 84

L.F. R.F. L.F. R.F. L.F. L.F. R.F.

85

86 87 88 89 90

L.F. R.F. L.F. L.F. R.F. L.F. R.F. L.F.

93

94 95 96 97 Tempo I

fp *molto rall.* *ff*

99 100 101 102 103 104 105 106

fp *molto rall. al fine* *ff* *sffz*

Grave ♩ = 50

The Temple of Ka Uka

By Ralph Ford (ASCAP)

2nd B♭ CLARINET



Pesante ♩ = 72

ff

9 Con furia ♩ = 152

tr

fp

sfz

17

mf

27

3

sfz

f

33

mf

f

44

fp

f

fp

sfz

p



2nd B♭ CLARINET - 2

54

49 50 51 52 53 54

p *mf*

55 56 57 58 59

f

60

61 62 63 64 65

f

69 Celebration!

66 67 68 69 70-72

fp *sfz*

clap

73

stomp

74 75 76 77 78

L.F. R.F. L.F. L.F. R.F. L.F. R.F. L.F.

mf *f*

79 80 81 82 83 84

L.F. R.F. L.F. R.F. L.F. L.F. R.F.

85

86 87 88 89 90

L.F. R.F. L.F. L.F. R.F. L.F. R.F. L.F.

93

94 95 96 97

L.F. R.F. *fp* *molto rall.* *ff*

98

Tempo I

99 100 101 102 103 104 105 106

Grave ♩ = 50

fp *molto rall. al fine* *ff* *sfz*

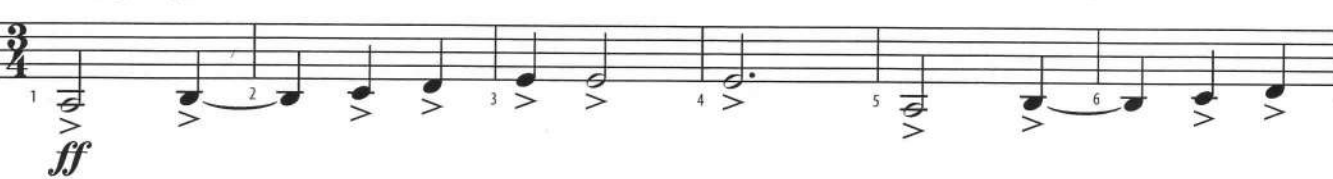
The Temple of Ka Uka

B♭ BASS CLARINET

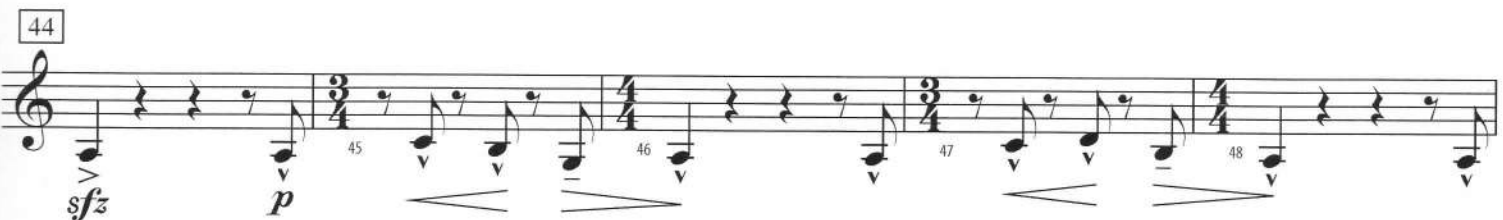
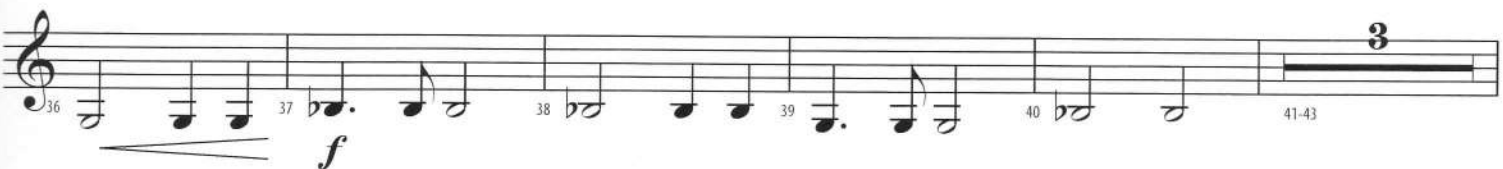
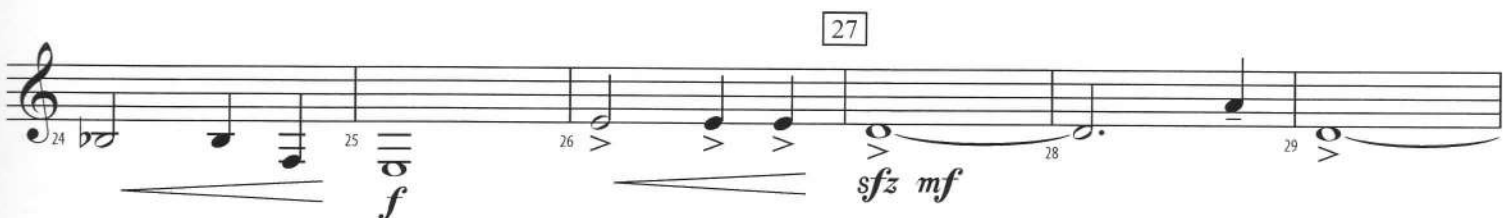
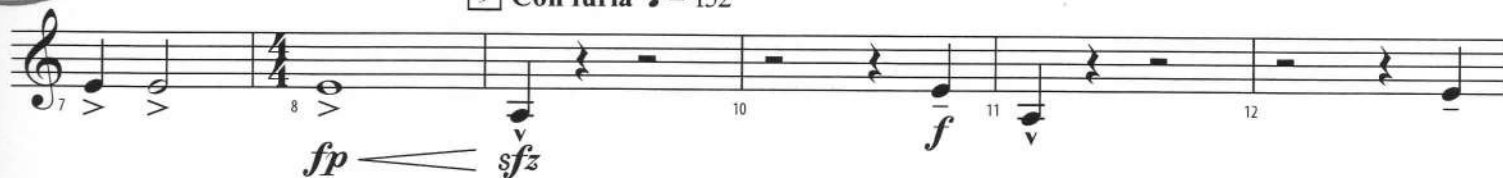
By Ralph Ford (ASCAP)



Pesante ♩ = 72



9 **Con furia** ♩ = 152



B♭ BASS CLARINET - 2

54

49 50-53 55 56

mf

60

57 58 59 61 62

f

63 64 65 66 67 68

fp

69 Celebration!

70-72 73 74 75 76

sfz *mf*

clap
stomp
L.F. R.F. L.F. L.F. R.F.

77

78 79 80 81 82

f

L.F. R.F. L.F. L.F. R.F. L.F. R.F. L.F.

85 Play

83 84 86 87 88

mf

L.F. R.F.

93

89 90 91 92 94

f *fp*

97 Tempo I

95 96 98 99 100

molto rall. *ff*

Grave ♩ = 50

101 102 103 104 105 106

fp *ff* *sfz*

molto rall. al fine

The Temple of Ka Uka

E♭ ALTO SAXOPHONE

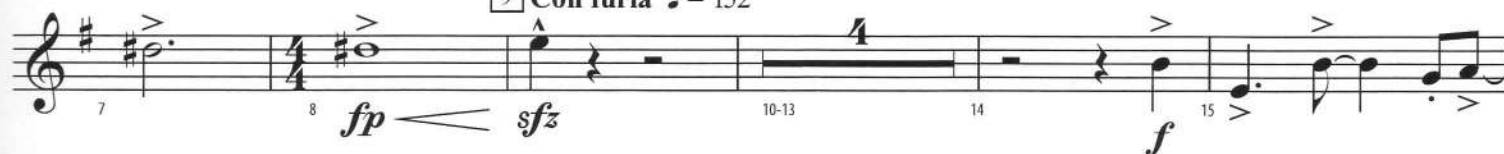
By Ralph Ford (ASCAP)



Pesante ♩ = 72



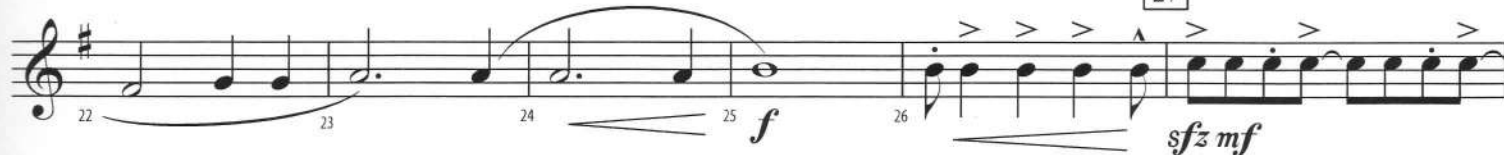
9 **Con furia** ♩ = 152



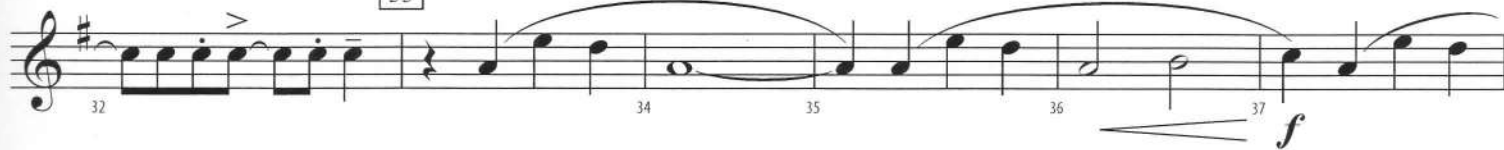
17



27



33



44



E♭ ALTO SAXOPHONE - 2

50 *p* (Fl.) *div.* 51 52 53 **54** *mf* **Play**

55 56 57 58 59 *f*

60 61 62 63 64 65 66

67 68 *fp* **69 Celebration!** *sfz* 70-72 *mf* **clap** **stomp** L.F. R.F. L.F.

77 75 L.F. R.F. 76 L.F. R.F. 78 L.F. R.F. 79 L.F. R.F. 80 *f*

85 81 L.F. R.F. 82 L.F. R.F. 83 L.F. R.F. 84 L.F. R.F. 86 L.F. R.F.

87 L.F. R.F. 88 L.F. R.F. 89 L.F. R.F. 90 L.F. R.F. 91 L.F. R.F. 92

93 *fp* **Play** 94 95 96 *molto rall.* **97 Tempo I** *ff* 98 99

Grave ♩ = 50 100 101 102 103 104 *fp* *molto rall. al fine* *ff* *sfz* 105 106

B♭ TENOR SAXOPHONE

The Temple of Ka Uka

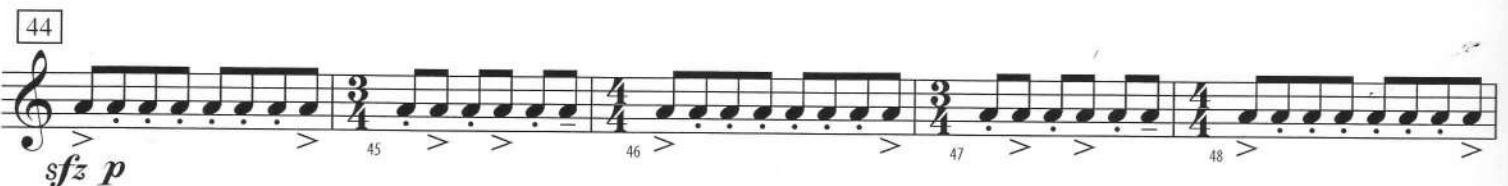
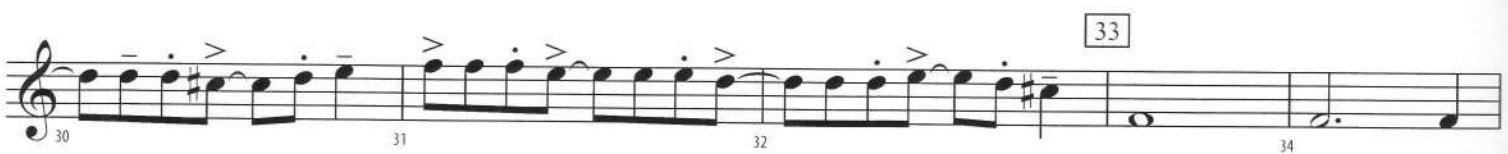
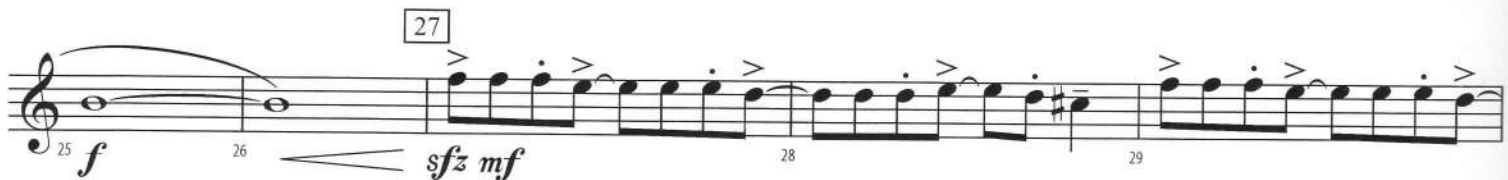
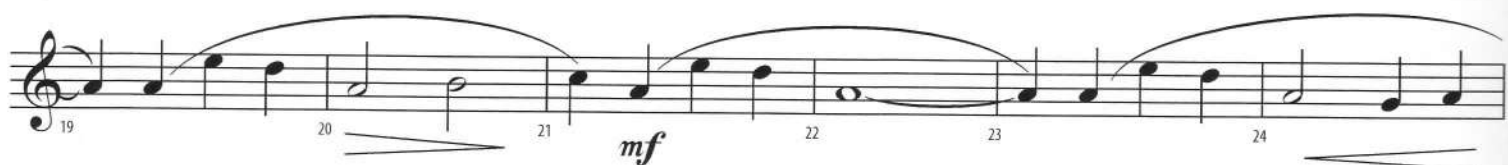
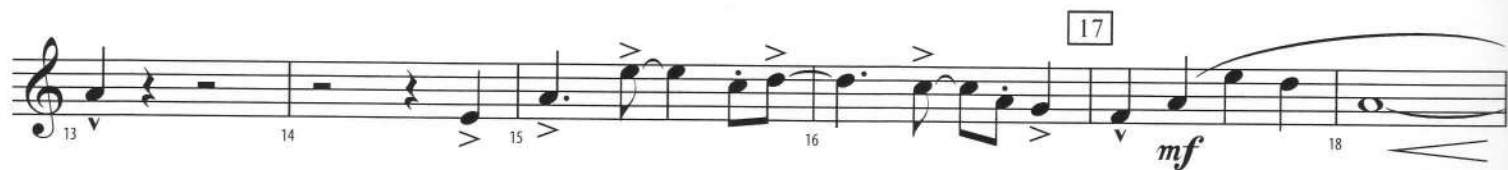
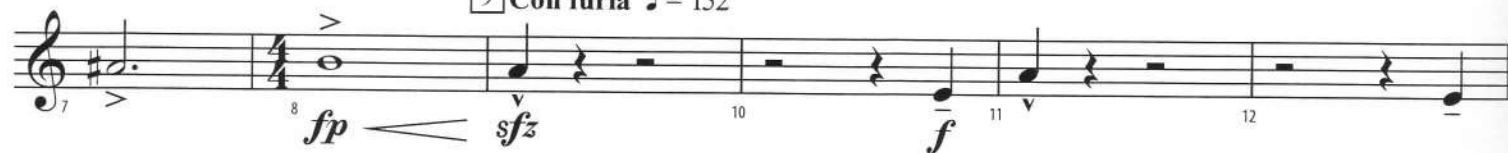
By Ralph Ford (ASCAP)



Pesante ♩ = 72



9 **Con furia** ♩ = 152



B \flat TENOR SAXOPHONE - 2

54

49 > > > > > 50-53 54 > mf 55 > 56 >

60

57 > > > > > 58 > 59 > 60 > f 61 > 62 >

63

63 > 64 > 65 > 66 > 67 > 68 fp

69 Celebration!

69 > sfz 70-72 73 > mf 74 > 75 > 76 >

clap

73 stop

L.F. R.F. L.F. L.F. R.F.

77

77 > f 78 > 79 > 80 > 81 > 82 >

L.F. R.F. L.F. L.F. R.F. L.F. R.F. L.F.

85

83 > f 84 > 85 > 86 > 87 > 88 >

L.F. R.F. L.F. R.F. L.F. L.F. R.F.

93

89 > fp 90 > 91 > 92 > 93 > 94 >

L.F. R.F. L.F. L.F. R.F.

Play

97 Tempo I

95 > ff 96 > 97 > 98 > 99 > 100 >

molto rall.

Grave ♩ = 50

101 > fp 102 > 103 > 104 > 105 > 106 >

molto rall. al fine

Dedicated to the Band Directors of the Central O'ahu District, Honolulu, Hawai'i

The Temple of Ka Uka

E♭ BARITONE SAXOPHONE

By Ralph Ford (ASCAP)



Pesante ♩ = 72

Sheet music for E♭ Baritone Saxophone, featuring measures 1 through 48. The music is in 3/4 time, key of D major, and includes dynamic markings such as *ff*, *fp*, *sfz*, *f*, *mf*, and *p*. The tempo is marked **Pesante** (♩ = 72). The score includes a section marked **9 Con furia** (♩ = 152) starting at measure 9. The music concludes with a final measure marked **3** at the end of the staff.



E♭ BARITONE SAXOPHONE - 2

54

49 50-53 54

mf

60

57 58 59 60 61 62

f

63 64 65 66 67 68

fp

69 Celebration!

70-72 73 74 75 76

sfz *mf*

clap

stomp

L.F. R.F. L.F. L.F. R.F.

77

78 79 80 81 82

f

L.F. R.F. L.F. L.F. R.F. L.F. R.F. L.F.

85 Play

83 84 85 86 87 88

mf

L.F. R.F.

93

89 90 91 92 93 94

f *fp*

97 Tempo I

95 96 97 98 99 100

ff

molto rall.

Grave ♩ = 50

101 102 103 104 105 106

fp *ff* *sfz*

molto rall. al fine

The Temple of Ka Uka

1st B♭ TRUMPET

By Ralph Ford (ASCAP)



Pesante ♩ = 72

ff

9 **Con furia** ♩ = 152

fp **sfz** **f**

f

27

33

sfz

f

fp

f

fp

f

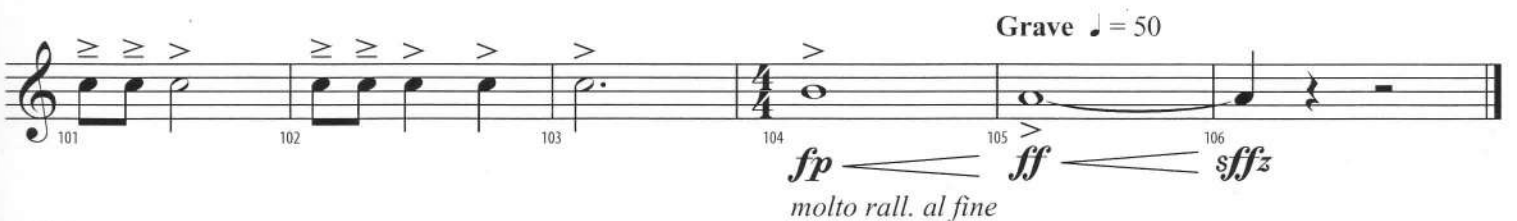
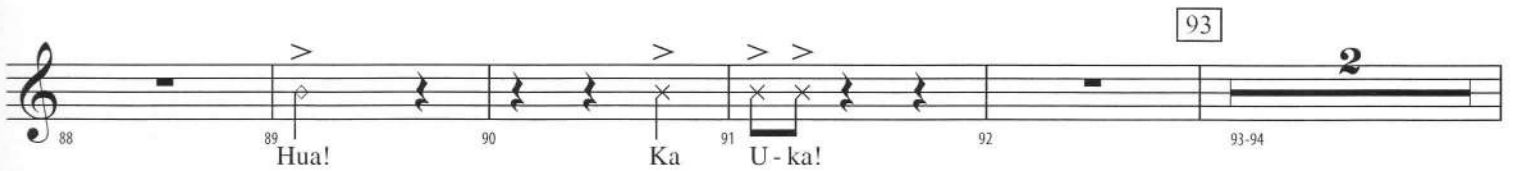
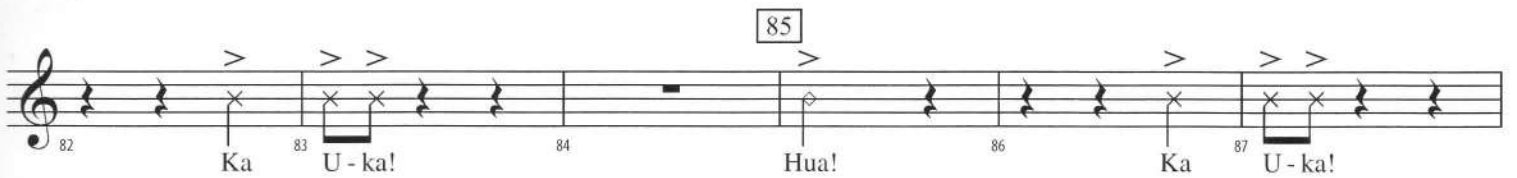
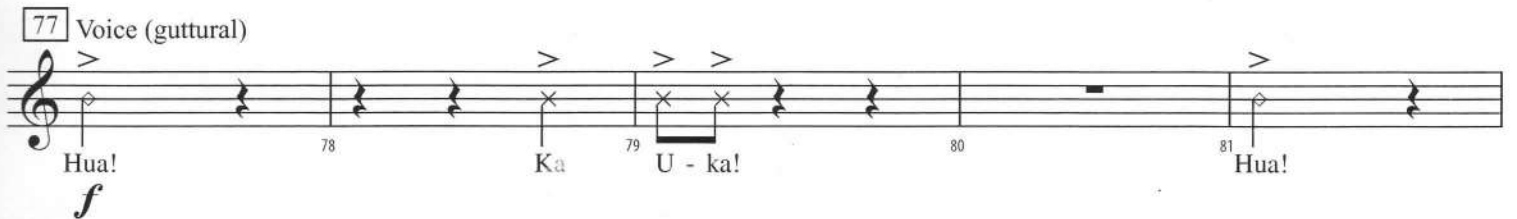
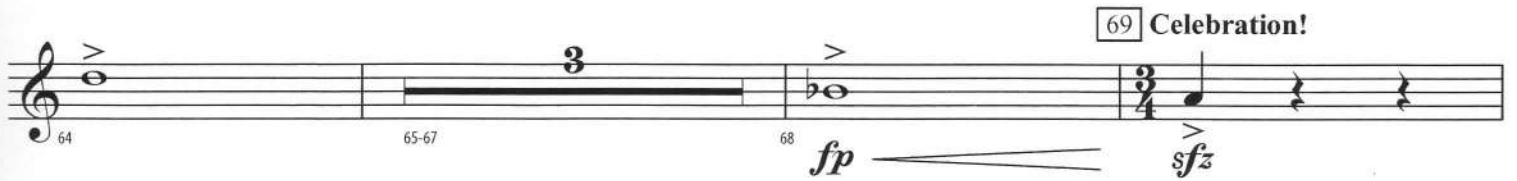
sfz

54

mf



1st B♭ TRUMPET - 2



The Temple of Ka Uka

2nd B♭ TRUMPET

By Ralph Ford (ASCAP)



Pesante ♩ = 72

1 *ff* 2 3 4 5

6 7 8 *fp* 9 **Con furia** ♩ = 152 *sfz f* 10

11 12 13 14

15 16 17 18-24 25 *f*

26 27 28-32 33 34 *f* 35 36 37 38 39

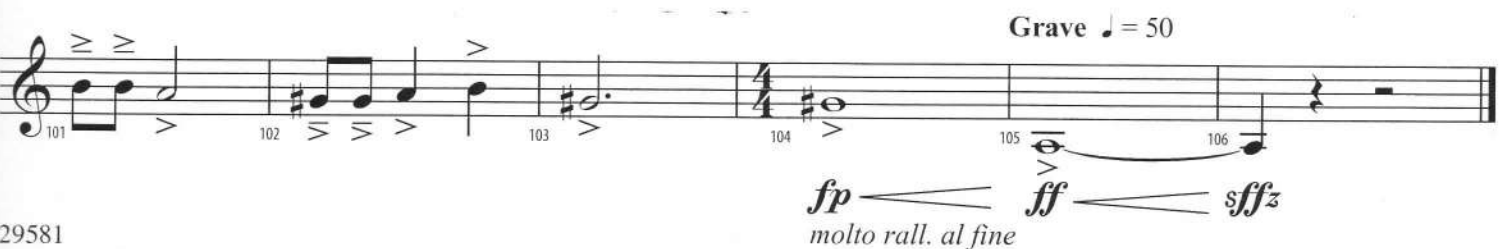
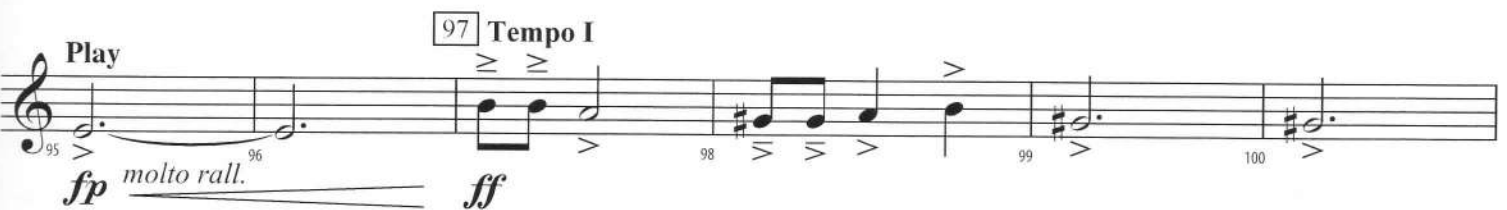
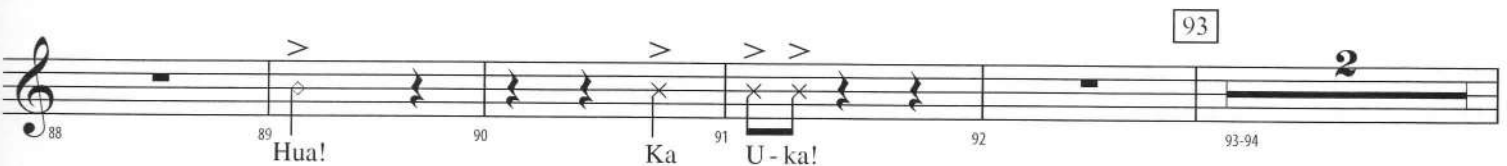
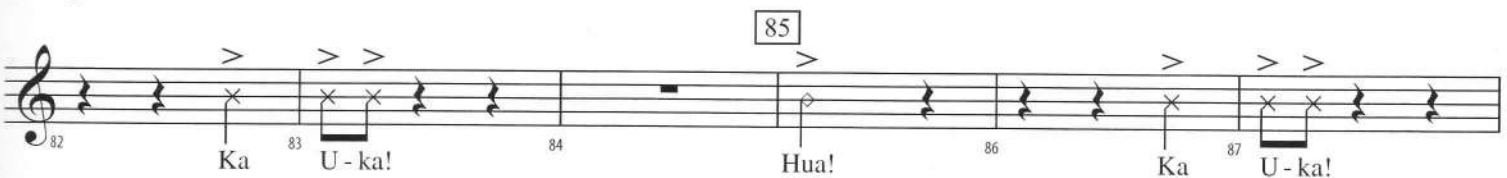
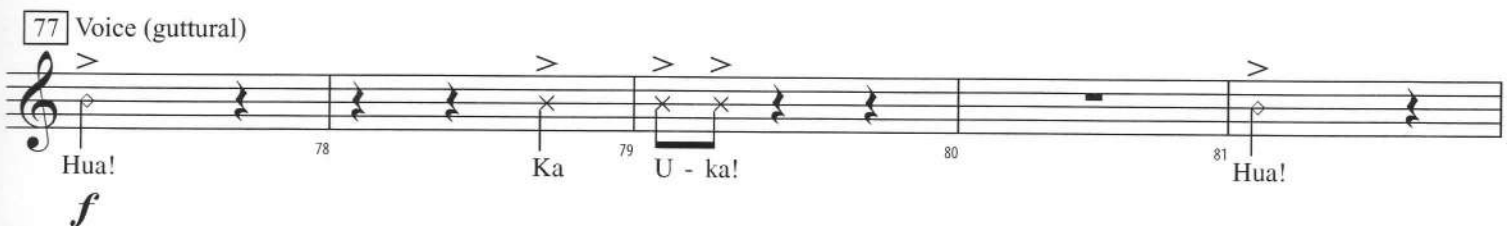
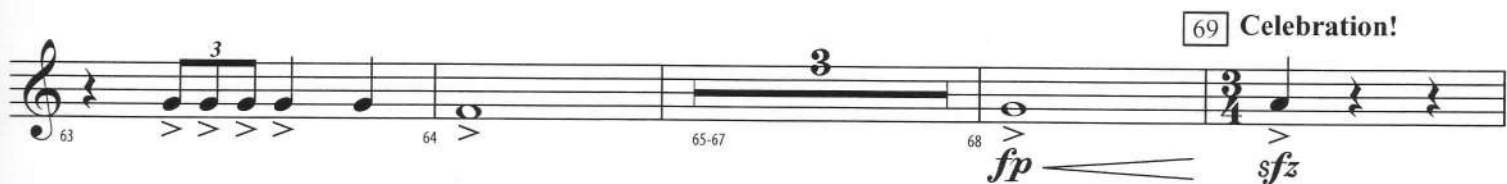
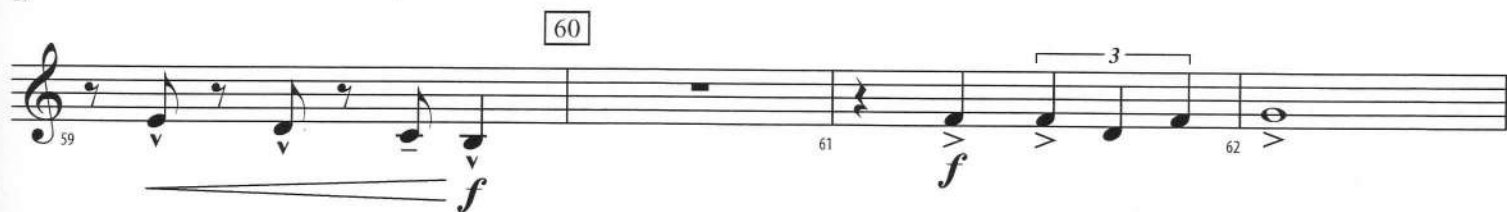
fp *f* *fp* *f*

40 41 42 43 44 *sfz*

45 46 47 48-53 54 *mf*



2nd B♭ TRUMPET - 2



Dedicated to the Band Directors of the Central O'ahu District, Honolulu, Hawai'i

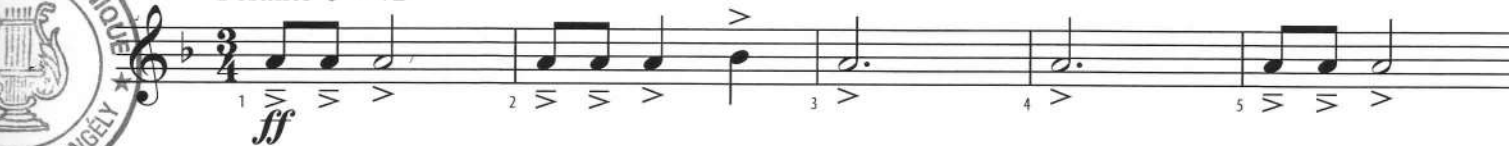
The Temple of Ka Uka

F HORN

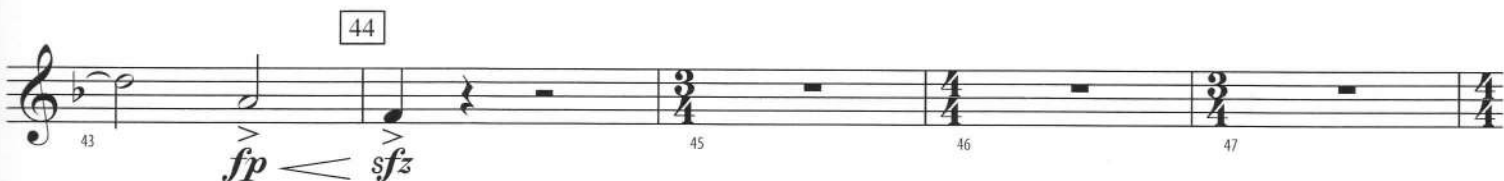
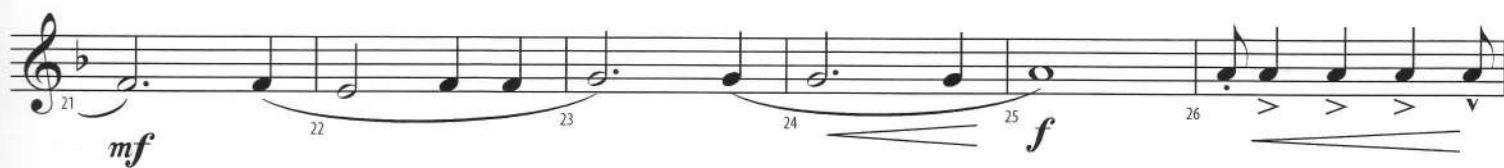
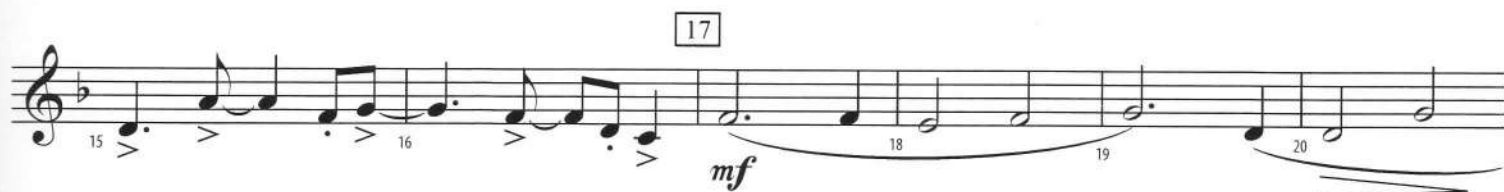
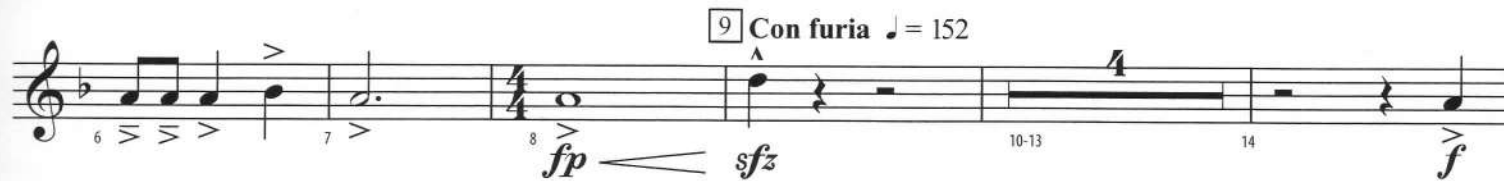
By Ralph Ford (ASCAP)



Pesante ♩ = 72



[9] Con furia ♩ = 152



F HORN - 2

54

54 *mf* 55 56 57

60

58 59 *f* 61 62

69 Celebration!

63 64 65 66 67 68 *fp* *sfz*

7

70-76

77

Voice (guttural)

78 Ka 79 U - ka! 80 81 Hua! 82 Ka *f*

85

83 U - ka! 84 85 Hua! 86 Ka 87 U - ka! 88

93

Play *tr*

89 Hua! 90 Ka 91 U - ka! 92 93 *fp* 94

97 Tempo I

95 96 *molto rall.* 97 *ff* 98 99 100

Grave ♩ = 50

101 102 103 104 *fp* 105 *ff* 106 *sfz* *molto rall. al fine*

Dedicated to the Band Directors of the Central O'ahu District, Honolulu, Hawai'i

TROMBONE

The Temple of Ka Uka

By Ralph Ford (ASCAP)



Pesante ♩ = 72

1 **ff** 2 3 4 5 6

7 8 **fp** **sfz** 10 **f** 11 12 13

14 15 16 17 **mf** 18 19

20 21 **mf** 22 23 24 25 **f**

26 27 **sfz mf** 28 29

30 31 32 33 34

35 36 37 **f** 38 39 40 41 **fp**

42 **f** 43 **fp** **sfz** 44 45 46 47 48-53 6



TROMBONE - 2

54 *mf* 55 56 57

58 59 60 *f* 61 62 63

64 65 66 67 68 *fp* 69 Celebration! *sfz*

70-76

77 Voice (guttural) *f* 78 Ka 79 U-ka! 80 81 Hua! 82 Ka 83 U-ka!

84 85 86 Ka 87 U - ka! 88 89 Hua!

90 Ka 91 U - ka! 92 93 Play *fp* 94 95 *molto rall.*

97 Tempo I *ff* 98 99 100 101

102 103 104 *fp* 105 *ff* 106 *sfz* Grave ♩ = 50 *molto rall. al fine*

Dedicated to the Band Directors of the Central O'ahu District, Honolulu, Hawai'i

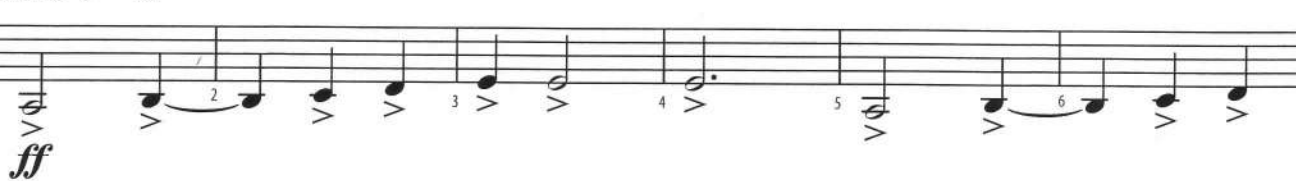
The Temple of Ka Uka

BARITONE Treble Clef

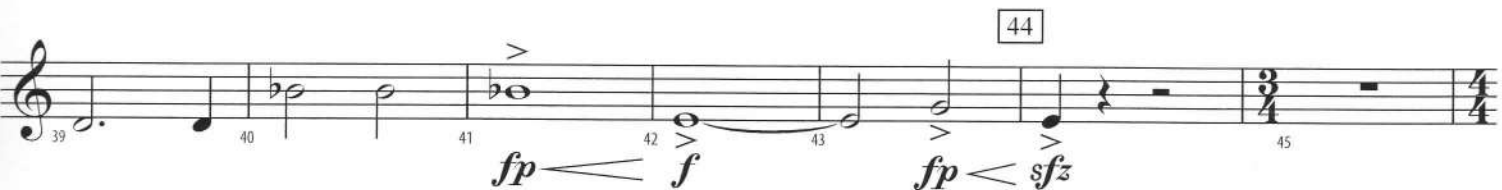
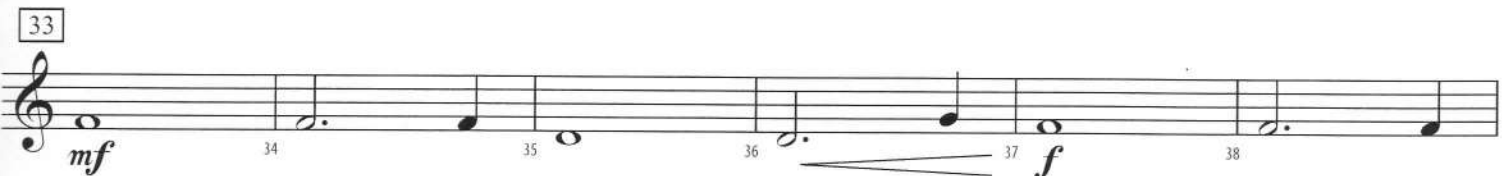
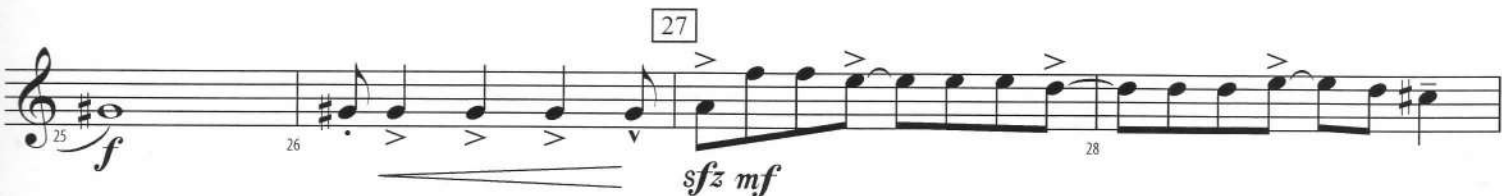
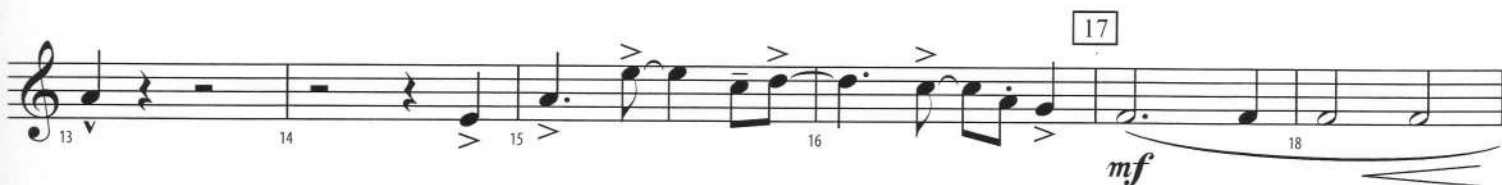
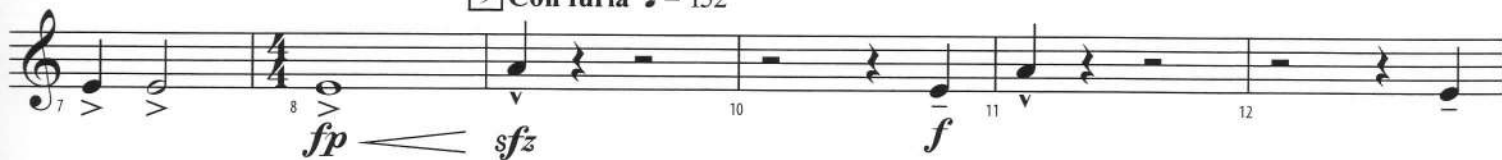
By Ralph Ford (ASCAP)



Pesante ♩ = 72



[9] Con furia ♩ = 152



BARITONE Treble Clef - 2

54

46 47 48-53 55

mf

56 57 58 59

f

60

61 62 63 64 65 66

69 Celebration!

77 Voice (guttural)

67 68 70-76 78

fp *sfz* *f*

Hua! Ka

79 U - ka! 80 81 Hua! 82 Ka 83 U - ka! 84

85

86 Ka 87 U - ka! 88 89 Hua! 90 Ka

93

91 U - ka! 92 94 95 *molto rall.* 96

fp

97 Tempo I

98 99 100 101

ff

Grave ♩ = 50

102 103 104 105 106

fp *ff* *sfz*

molto rall. al fine

Dedicated to the Band Directors of the Central O'ahu District, Honolulu, Hawai'i

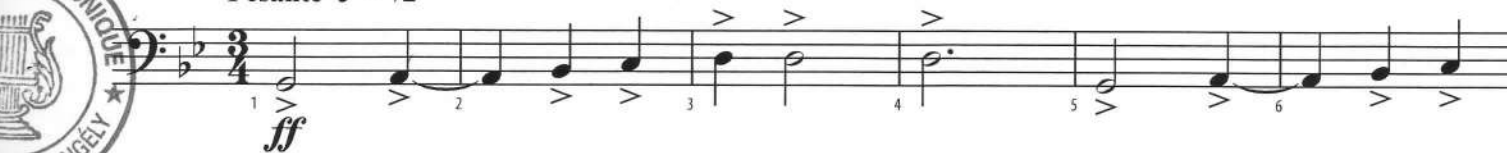
The Temple of Ka Uka

BARITONE

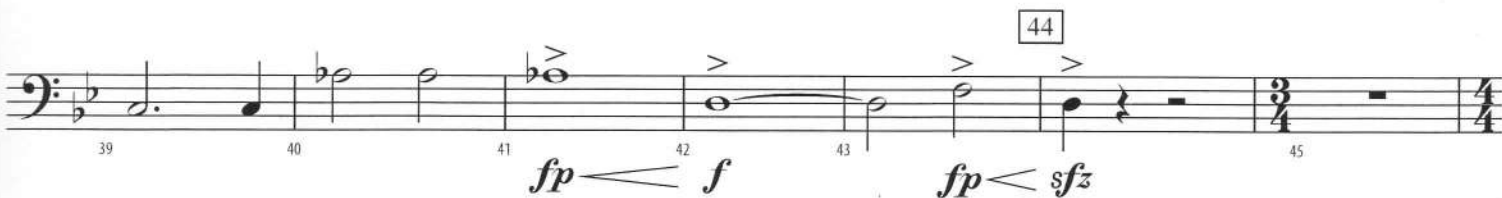
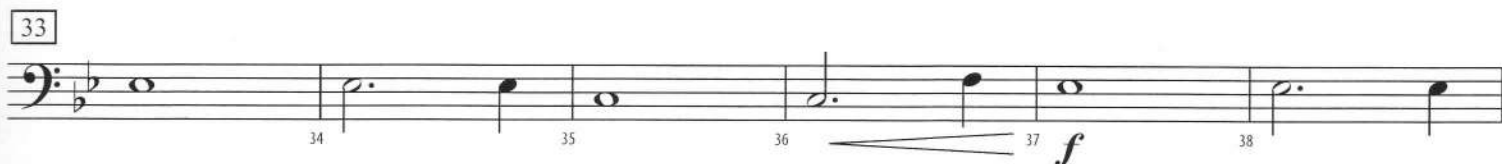
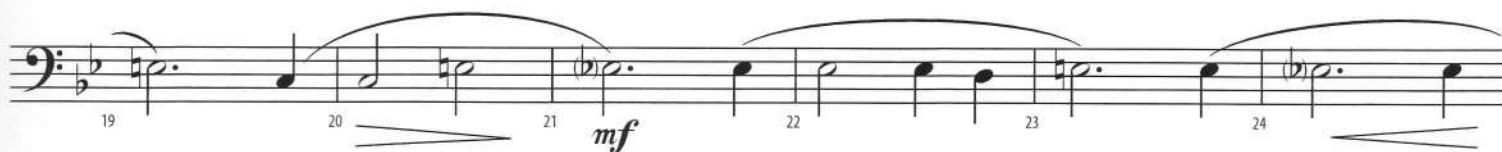
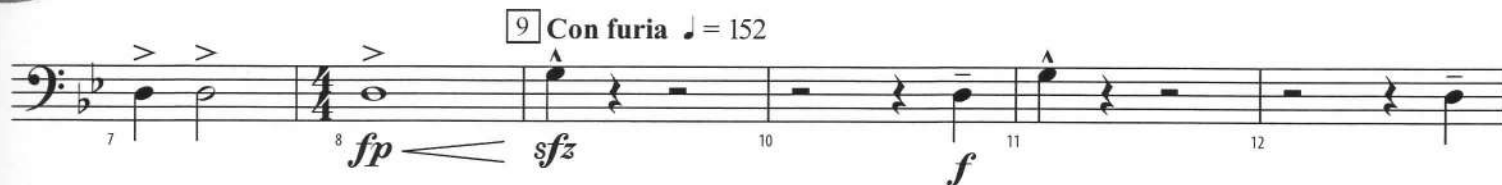
By Ralph Ford (ASCAP)



Pesante ♩ = 72



9 Con furia ♩ = 152



BARITONE - 2

54

46 47 48-53 55

mf

60

56 57 58 59

f

61 62 63 64 65 66

69 Celebration!

77 Voice (guttural)

67 68 70-76 78

fp *sfz*

Hua! Ka

f

79 80 81 82 83 84

U - ka! Hua! Ka U - ka!

85

86 87 88 89 90

Hua! Ka U - ka! Hua! Ka

93 Play

91 92 94 95 96

U - ka!

fp *molto rall.*

97 Tempo I

98 99 100 101

ff

Grave ♩ = 50

102 103 104 105 106

fp *molto rall. al fine* *ff* *sffz*



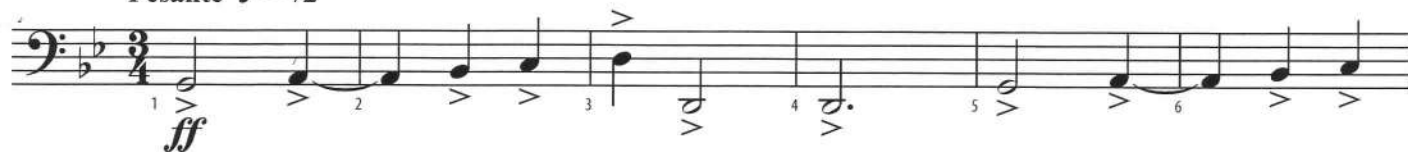
TUBA

Dedicated to the Band Directors of the Central O'ahu District, Honolulu, Hawai'i

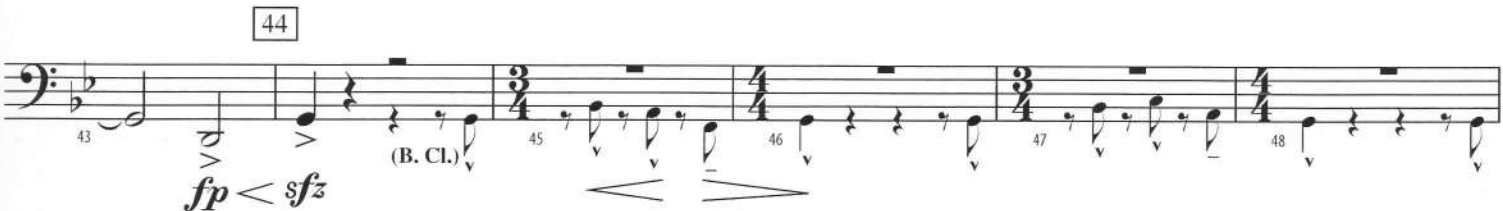
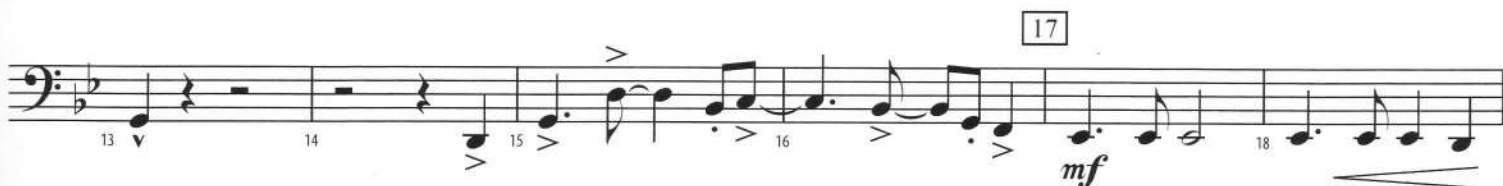
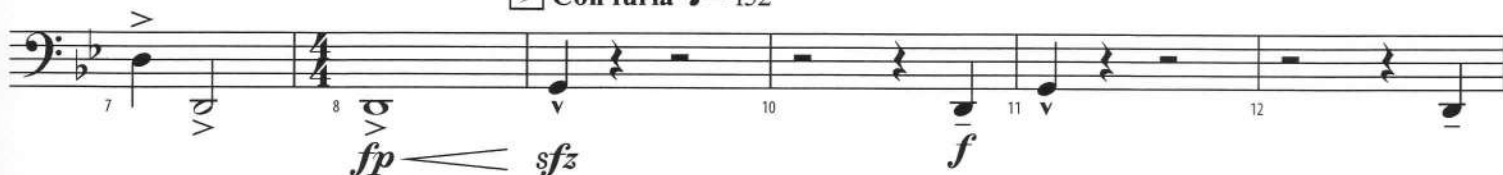
The Temple of Ka Uka

By Ralph Ford (ASCAP)

Pesante ♩ = 72



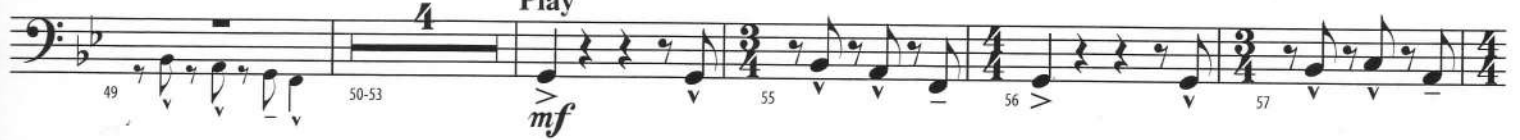
[9] Con furia ♩ = 152



TUBA - 2

54

Play



60

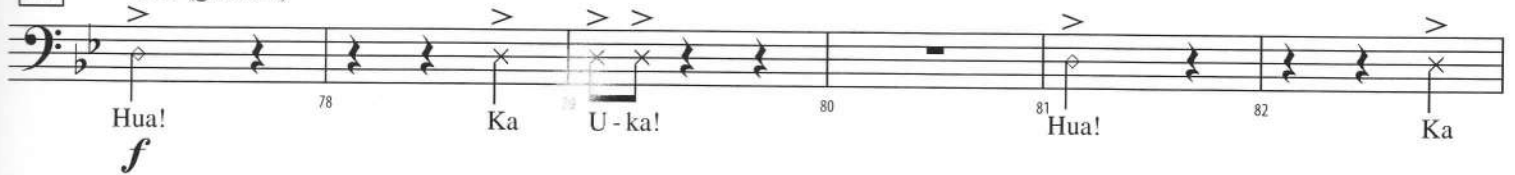


69 Celebration!



77

Voice (guttural)

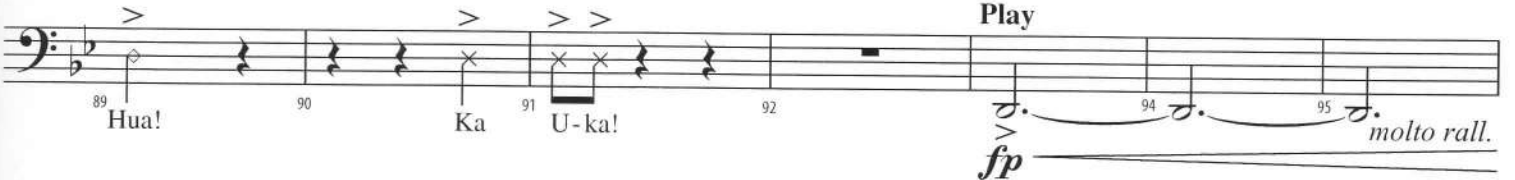


85

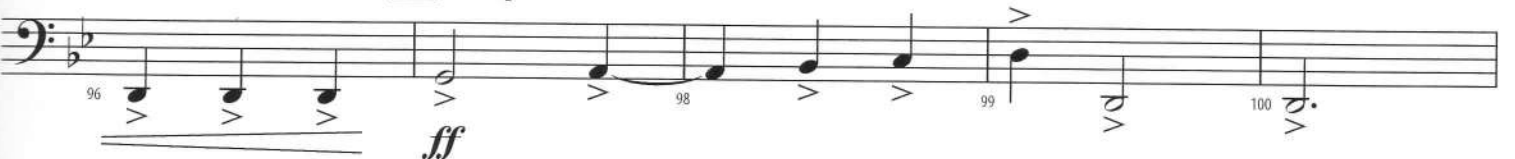


93

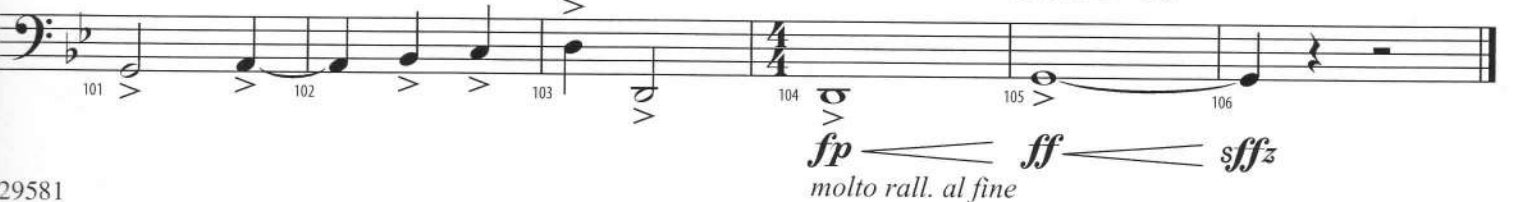
Play



97 Tempo I



Grave ♩ = 50



The Temple of Ka Uka

Contrebasse ut

By Ralph Ford (ASCAP)

Pesante

ff

7

fp *fz* *f*

Con furiosa

13

mf

19

mf

25

f *fz* *mf*

31

37

f *fp* *f*

43

fp *fz*

49

mf

2 Contrebasse ut

The Temple of Ka Uka

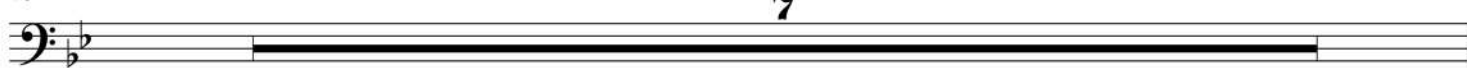
58



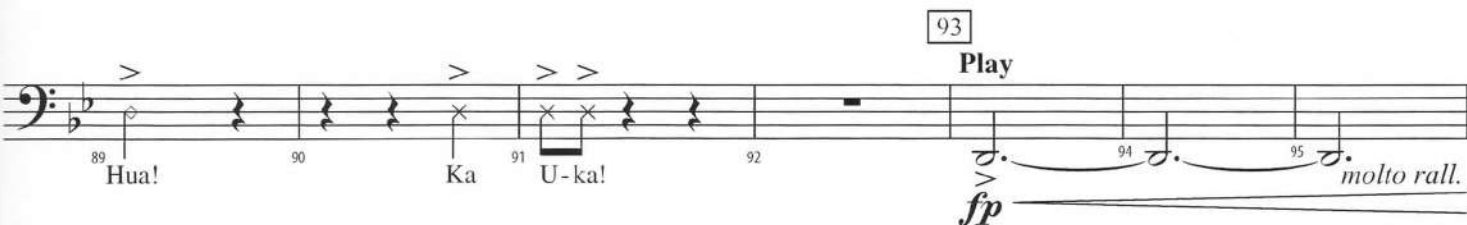
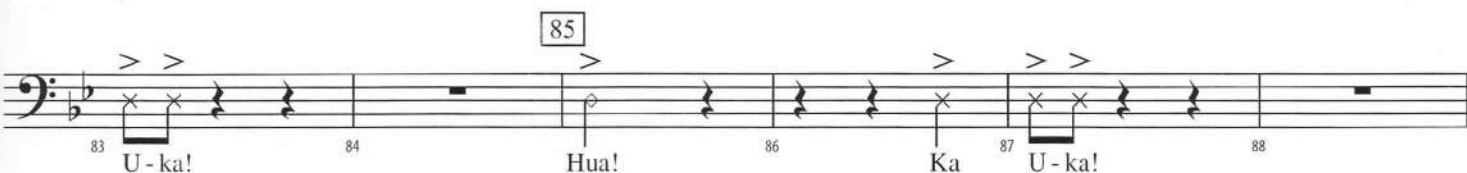
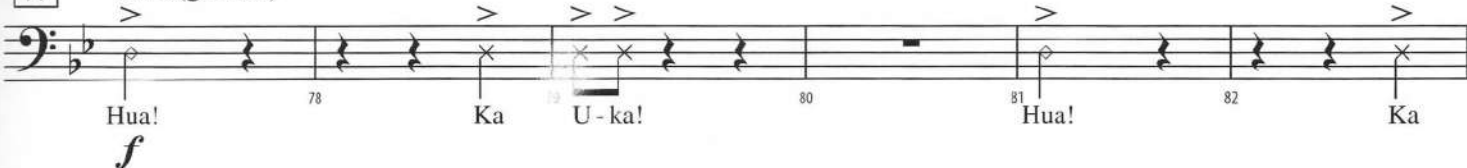
64



70



77 Voice (guttural)



96



101



Dedicated to the Band Directors of the Central O'ahu District, Honolulu, Hawai'i

The Temple of Ka Uka

MALLET PERCUSSION
(Bells/Xylophone)

By Ralph Ford (ASCAP)

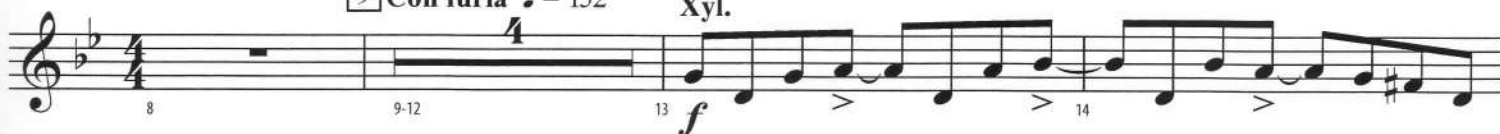


Pesante ♩ = 72



[9] Con furia ♩ = 152

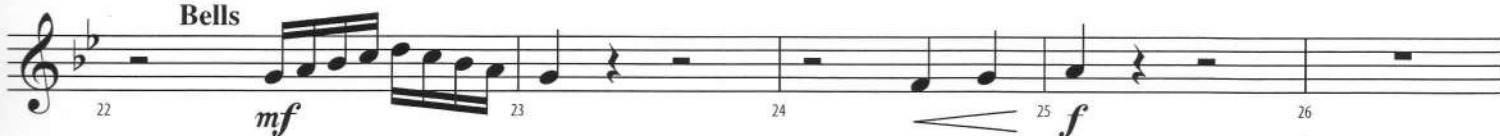
Xyl.



[17]



Bells



[27]



Xyl.

[33]

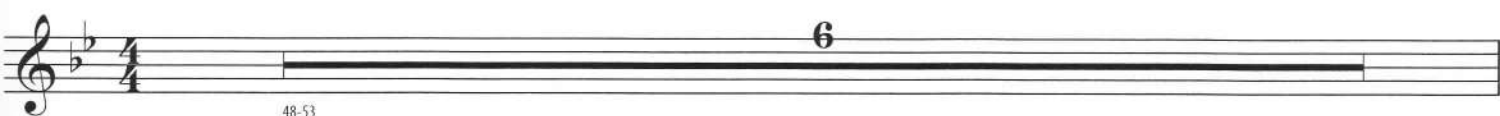


Bells

[44]



6



MALLET PERCUSSION - 2

54 Xyl. *mf*

60 Bells *mf*

69 Celebration! *sfz*

70-76

77 Voice (guttural) *f*

Hua! Ka U - ka!

85

Hua! Ka U - ka! Hua!

86 Ka U - ka! 87 88 89 Hua! 90 Ka

93 94 95 96 *molto rall.* *fp*

U - ka! Play *tr*

97 Tempo I 98 99 100 101 102 103 104 *fp* *molto rall. al fine* 105-106 Grave ♩ = 50

Xyl. *tr*

The Temple of Ka Uka

By Ralph Ford (ASCAP)

PERCUSSION 1

(Hi-Hat Cymbals/Snare Drum/
Large Tom, Bass Drum)



9 **Con furia** ♩ = 152

Pesante ♩ = 72

H.H.

B.D.

f

2

mf

mf

f

mf

sfz

mf

f

fp

44

f

6

1-7 8 10 11 12 13 14 15 16 17 18 19 20 21 22 23 24 25 26 27 28-31 32 33 34 35 36 37 38 39 40 41 42 43 45 46 47 48-53

PERCUSSION 1 - 2

54

S.D. *mf*

60

f

69 Celebration!

Tom-Tom

sfz p

mf

77

f

85

93

fp

molto rall.

97 Tempo I

ff *fp* *ff* *sfz*

molto rall. al fine

The Temple of Ka Uka

By Ralph Ford (ASCAP)

PERCUSSION 2

(Tam-Tam/Triangle, Suspended Cymbal,
Shaker or Beaded Gourd)



Susp. Cym.

Pesante ♩ = 72

Tam-Tam *ff*

Con furia ♩ = 152

1 *p* 2 *p* 3 *ff* 4 5 6 7

8 *p* 9 *f* 10-11 12 *p* 13 *f* 14-15 16 *p* 17 *f* 18-19

20 *p* 21 *f* 22-23 24 *p* 25 *f* 26 *p* 27 *f* 28-32 33 34-40 41 42 *p* 43 *f*

Choke

Trgl. + ○ + +

44 45 46 47

Susp. Cym.

Choke *mf* *sim.*

52 53 54 55 56 *sim.*



PERCUSSION 2 - 2

57 58 59 60 61 62

p \curvearrowright *f* *p* \curvearrowright *f*

63-64 65 66 67 68 69

p \curvearrowright *f* *p* \curvearrowright *ff*

Celebration!

Shaker or Beaded Gourd

70 71 72 73 74

p \curvearrowright *mf*

75 76 77 78 79

p \curvearrowright *f*

Tam-Tam

80 81 82 83 84

p \curvearrowright *f* *p* \curvearrowright *f*

Tam-Tam

85 86 87 88 89

f *p* \curvearrowright *f*

Tam-Tam

90 91 92 93 94

p \curvearrowright *f*

95 96 97 98 99

molto rall. *ff* *p* \curvearrowright *ff*

Tempo I

100 101 102 103 104 105 106

p \curvearrowright *ff* *p* \curvearrowright *ff* *f* \curvearrowright *ff*

Grave ♩ = 50

Choke

molto rall. al fine

Dedicated to the Band Directors of the Central O'ahu District, Honolulu, Hawai'i

The Temple of Ka Uka

TIMPANI

By Ralph Ford (ASCAP)



Pesante ♩ = 72
Tune: G, A \flat , C, D

1 *ff* 2 3 4 *fp* *ff*

5 6 7 8 *fp* *ff* 9 *sfz* **Con furia** ♩ = 152

10 11 *p* *f* 12 13 *p* *f* 14-16 **3**

17-25 **9**

26 *fp* *sfz* 27 28 29 30 31 32 *fp* *mf* 33

34-43 **10**

44 45 46 47 48-53 **6**

54 55 56 57 58-59 **2**



TIMPANI - 2

60



69 Celebration!



77

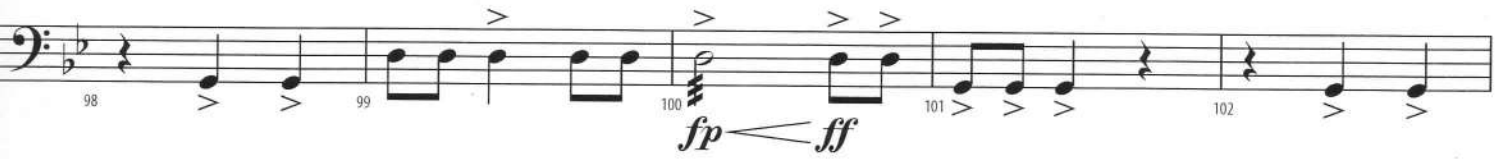
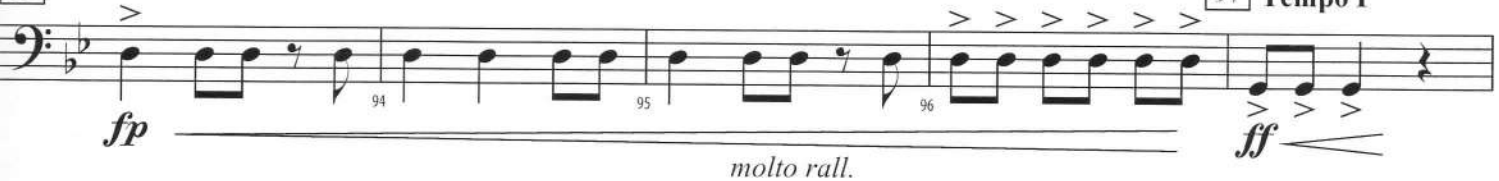


85



93

97 Tempo I



Grave ♩ = 50

